

Snack units are made of AISI 430 stainless steel with AISI 304 top plate. All snack units include pressed top plate or basins with round internal angles and ergonomic front panels. All connection points are located on the device rear side. Wide selection of models and options helps in setting up a compact customized configuration.



- External basin filling.
- Simple control by means of one regulation knob
- The drain is placed in the front part, fitted with a safety device to prevent unwanted water drainage.
- Signalling of the heating elements with an indicator
- Drain  $\frac{3}{4}$
- VT 07 E/V - The package includes also the fitting extension for simpler water drainage into the vessel
- GN  $\frac{1}{2}$  200 mm
- Basin volume 8 liters
- The boilers include the safety thermostat
- Safety thermostat: 130 °C
- Operation thermostat: 30-110 °C



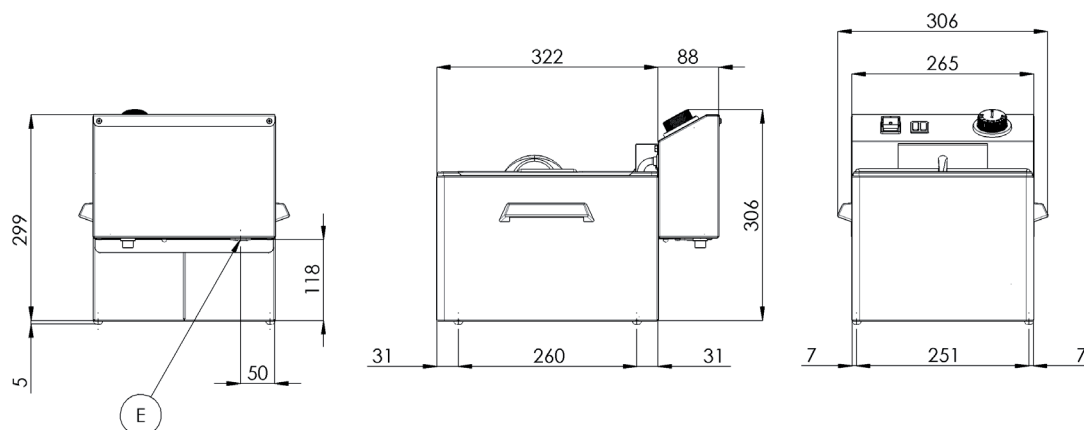
VT 07 E



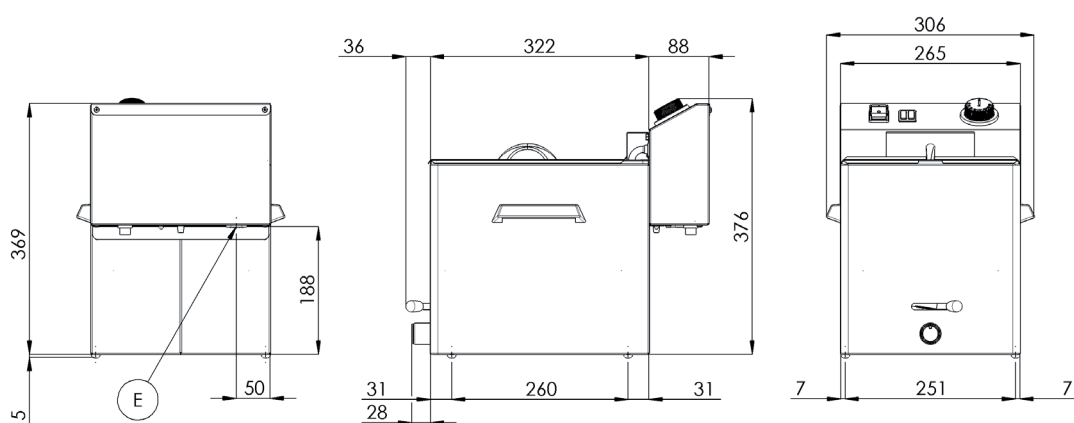
VT 07 E/V

Index	Model	mm	kg	V / Hz	kW	Baskets	° C
102 600 100	VT 07 E	270 x 420 x 370	7,5	230 / 50-60	3,4	1x 210 x 235 or 3x 138 x 100	30 - 110
102 600 110	VT 07 E / V	270 x 420 x 370	8,7	230 / 50-60	3,4	1x 210 x 235 or 3x 138 x 100	30 - 110

## VT 07



## VT 07 V



E – electric