

Snack units are made of AISI 430 stainless steel with AISI 304 top plate. All snack units include pressed top plate or basins with round internal angles and ergonomic front panels. All connection points are located on the device rear side. Wide selection of models and options helps in setting up a compact customized configuration.



WE



- Full stainless steel design
- Capacity 1 or 2 x GN - 1/2 - 150
- Heating units placed beneath the basin
- Power supply switch
- Indication of operation and heating
- Independent control for each basin
- Tilting lid
- False perforated bottom
- Drain cock with safety device



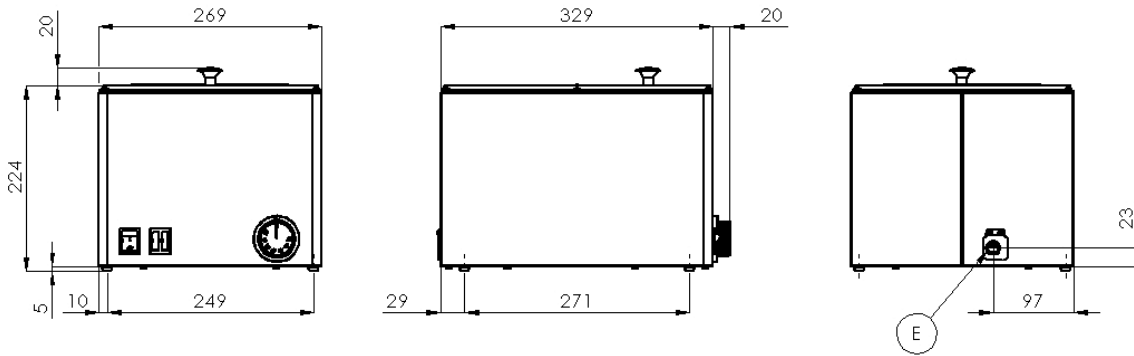
WE 12
WEV 12



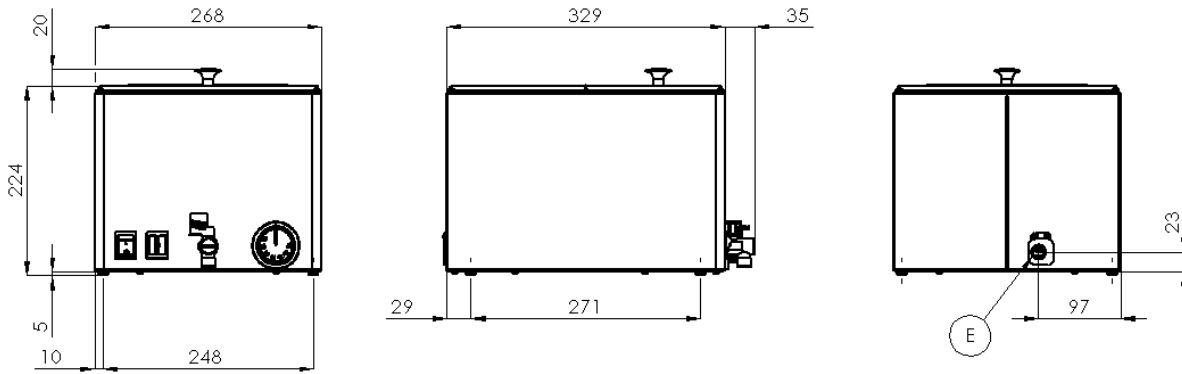
WE 11
WEV 11

Index	Model	mm	kg	V / Hz	kW	GN	Drain	° C
102 500 100 102 500 150	WE 12 WEV 12	265 x 330 x 220	6,1 6,3	230 / 50-60	1	GN 1/2 - 150 GN 1/2 - 150	- safety	30 - 90
102 500 500 102 500 501	WE 11 WEV 11	530 x 330 x 220	11 11,5	230 / 50-60	2	2x GN 1/2 - 150 2x GN 1/2 - 150	- safety	30 - 90

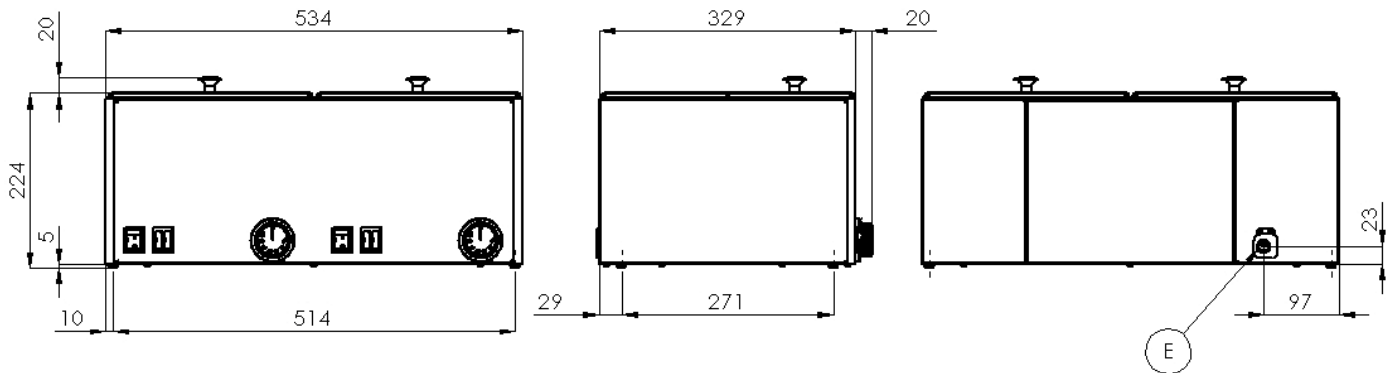
WE 12



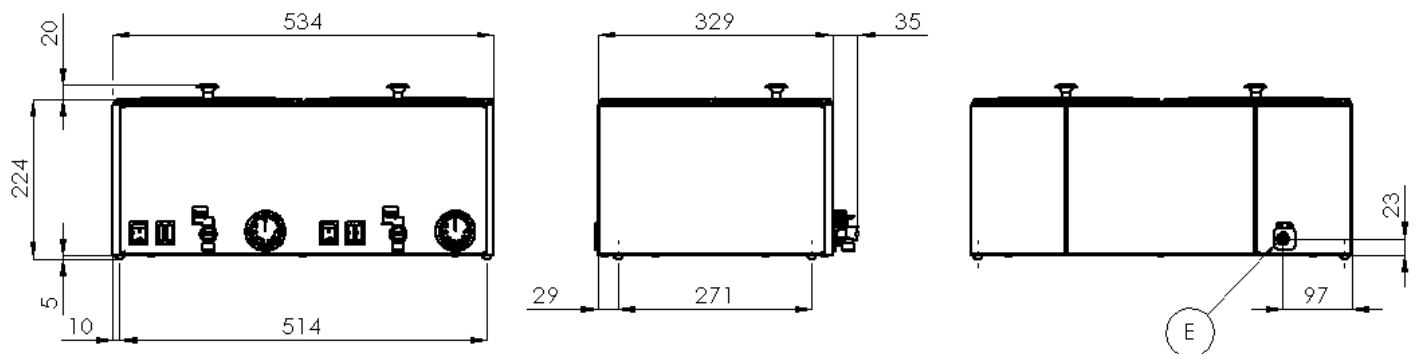
WEV 12



WE 11



WEV 11



E - electric